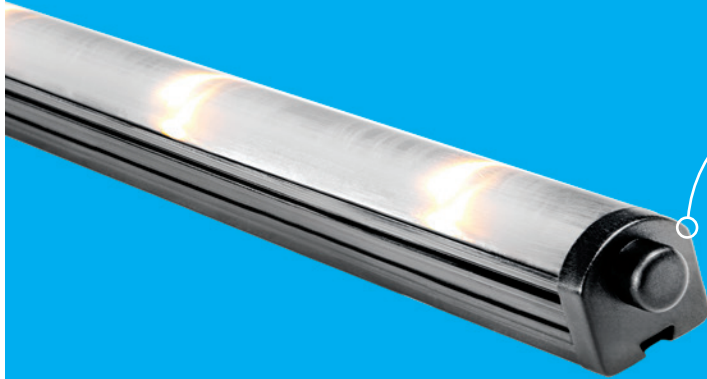


i2Systems

Simply  
Advanced.™

★★★★★  
MADE IN THE  
USA



**WIDE LATERAL  
THROW**  
Patented optical  
system provides even  
light distribution

**ONLY 3/4"  
THICK**  
Rugged design,  
advanced  
features

# S-Line®

## DIMMABLE LED LINEAR LUMINAIRE

S-Line evenly illuminates counters and workspaces for maximum coverage and controllability. High performance, small size and versatile mounting options enable simple installation into a variety of locations.



## FEATURES

### A Perfect Blend

Patented optical system provides close-to-fixture illumination with short mixing distance and blended color.

### Dimmable

Using our LightLink™ Dimmers, experience simple, smooth LED dimming.

### Protected

Onboard SmartDriver™ and Active Thermal Management™ offer a level of fixture protection not found anywhere else.

### Rugged Design

Impact-resistant polycarbonate optic and anodized aluminum construction ensure product longevity.



### Typical Applications

- Under Cabinet
- Valance
- Compartment
- Engine Room

### Quick Specs

<b>6W</b>	Power / Foot
<b>270</b>	Lumen Output / Foot Typ
<b>65°</b>	Beam Angle
<b>30°</b>	Special Order Angle
<b>82°</b>	Special Order Angle

### LED Color

- 3000°K Warm White
- 4000°K Neutral White
- 5700°K Cool White
- Red
- Green
- Blue

### Housing

- Black Mil-Spec Anodized Aluminum

### Mounting

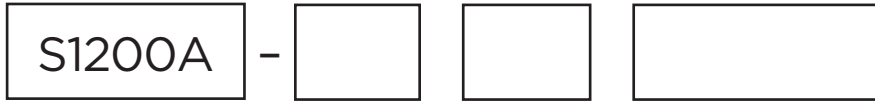
- Adjustable, Fixed & Pivot Mounts

The S-Line is a dimmable LED linear luminaire made with impact-resistant polycarbonate optic and anodized aluminum construction to ensure product longevity. Five different lengths are available, with fixed or adjustable mounting options.

US 8,255,487 | US 8,264,172  
 US 8,469,542  
 Additional Patents Pending

CUSTOMER COMPANY	CUSTOMER CONTACT
P.O.#	CUSTOMER PHONE #
SHIPPING ADDRESS	

**FIXTURE BUILDER**



**FIXTURE TYPE**

S-Line

**LENGTH**

- 1 12"
- 8 18"
- 2 24"
- 3 36"
- 4 48"

**BEAM ANGLE**

- 6 65°
- 3\* 30°
- 8\* 82°

**LED COLOR**

- AAG Cool White 5700°K
- BBD Neutral White 4000°K
- CBB Warm White 3000°K
- DC Green
- EC Blue
- HC Red

**OPTIONS**

**RETAIL PACKAGING**

*Retail Packaging available for 12" length only.*

*\* 30° and 82° Beam Angles are Special Order and may require a longer lead time.*

**ACCESSORIES**

**DIMMING CONTROL**

**LIGHTLINK**

- LL-101** Momentary Switch Dimmer
- LL-205-10V** 0-10V Bridge & Dimmer

**BRACKETS**

**BRACKETS**

- SLA-1** Adjustable
- SLA-2** Fixed
- SLA-3** End Mount Pivot

LightLink Dimmers dim up to 50 Feet of S-Line using a single control wire for dimming.

See below for additional dimming information and wiring diagrams.

**RETAIL PACKAGING**

AVAILABLE IN RETAIL BLISTER PACK

**PART NUMBER**

**DESCRIPTION**

- S1200A-16AAG** Cool White 12" 65 Degree
- S1200A-16CBB** Warm White 12" 65 Degree

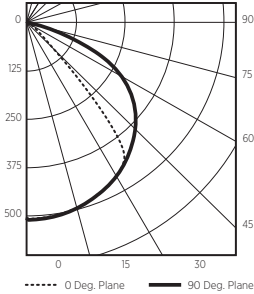
*Product in Blister Pack includes quantity (2) SLA-2 Fixed Mounting Brackets in each package.*

**QUICK SPECS**

<b>Input Voltage</b>	9-30V DC
<b>Power / Ft</b>	6 Watts
<b>Lumens / Ft</b>	270 lms typ. @ 3000°K
<b>Efficiency</b>	47 lms / W typ. @ 3000°K
<b>Beam Angle</b>	65°
<b>Operating Temp</b>	-20°C to 40°C
<b>Max. Case Temp</b>	50°C
<b>Wiring</b>	6 Ft, 22AWG Cable
<b>Housing</b>	Mil-Spec Anodized Aluminum
<b>Lens</b>	Impact-Resistant Polycarbonate

## PHOTOMETRICS

### S-LINE (S1200A-46CBB) RESULTS



Mounting Height	fc @ Center Beam	Diameter of Lighted Plane
4.0 ft	31.6 fc	5.4 ft
6.0 ft	14.0 fc	8.1 ft
8.0 ft	7.9 fc	10.8 ft
10.0 ft	5.1 fc	13.5 ft
12.0 ft	3.5 fc	16.2 ft
14.0 ft	2.6 fc	18.9 ft
16.0 ft	2.0 fc	21.5 ft

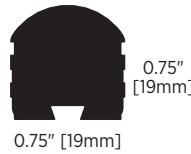
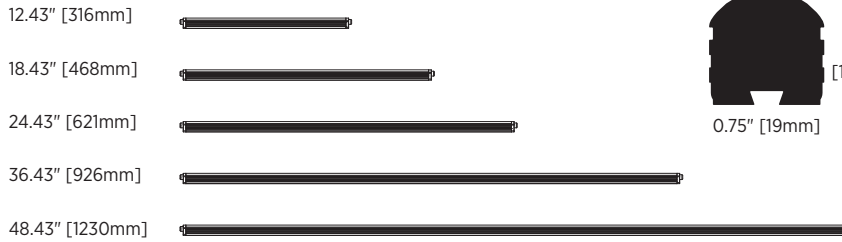
for lux, multiply by 10.8

### Multiplier Table

3000°K	4000°K	5700°K
	x1.05	x1.10

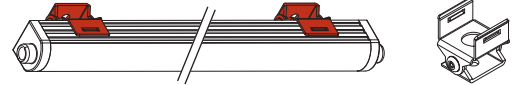
All results are according to IESNA LM-79-2008: Approved Method for the Electrical and Photometric Testing of Solid-State Lighting.

## DIMENSIONS



## MOUNTING

### SLA-1: Adjustable Mounting Bracket



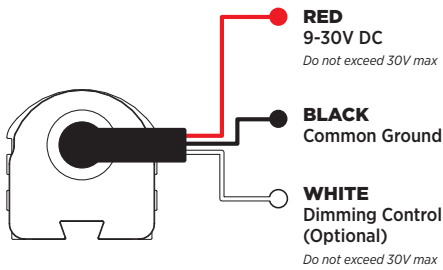
### SLA-2: Fixed Mounting Bracket



### SLA-3: Pivot Mounting Bracket



## WIRE FUNCTION



### Using 3rd Party Multiplex & PWM Dimmers:

The White Dimming Control wire is engineered to work with i2Systems LightLink™ Dimmers and 3rd party PWM type dimmers.

To use a 3rd party PWM dimmer, drive the White Dimming Control Wire using a Pulse Width Modulation (PWM) Controller. By driving the White Dimming Control Wire Low to DC Common, the Fixture turns off. By driving the White Dimming Control Wire High to DC Positive (i.e. +24V), or by allowing the wire to Float (no connection), the Fixture turns on to 100%.

The PWM signal must be a Square Wave at a fixed frequency and a maximum voltage of 30V DC. Frequency range may be between 100Hz and 500Hz (user selected). A wiring example is shown on the last page of this spec sheet.

## PROTECTION FEATURES

### Active Thermal™

Active Thermal dims the S-Line to help reduce the risk of overheating.

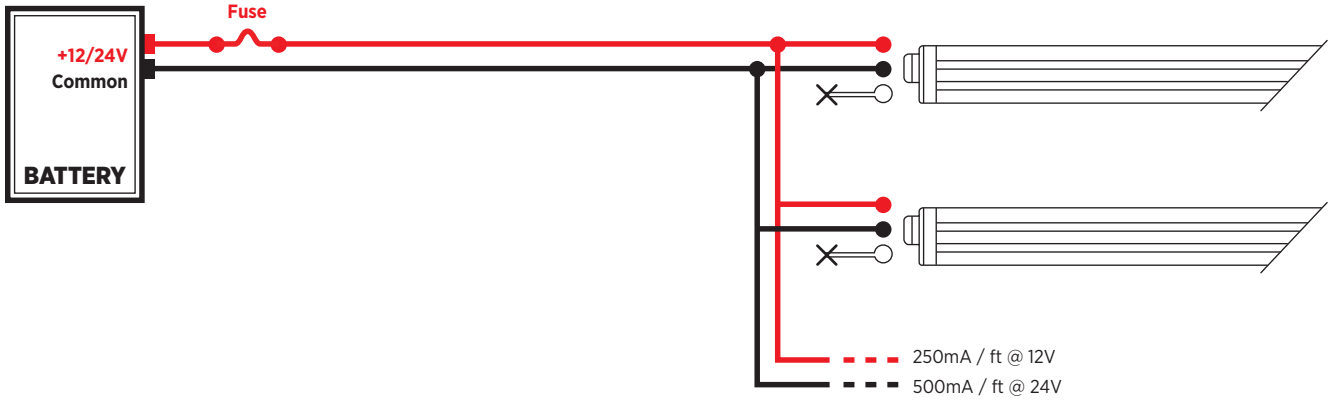
### Electrical Protection

- Dim Line Protected to 30V DC
- Reverse Polarity Protection
- Auto-Reset Fuse

**LIGHTLINK** See wiring examples below.

### WIRING EXAMPLE

#### 12/24V DC NO DIMMING



### WIRING EXAMPLE

#### 12/24V DC PUSH BUTTON SWITCH DIMMING

