



S-Line S1200

LED Linear Light for General Lighting + Dimming

PRODUCT HIGHLIGHTS

- 6 Watts / Ft.
- 9-30V DC Input
- 0 to 100% Dimming
- 12", 18", 24", 36", 48" Lengths
- 30°, 65°, 82° Emitting Angles
- Polycarbonate Optic
- Flexible Mounting Options

SPECIFICATIONS

SUITABLE ENVIRONMENTS



LED COLORS

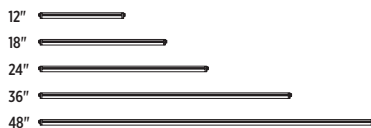
- Cool White
- Neutral White
- Warm White
- Green
- Blue
- Red

FINISH



Black

LENGTHS



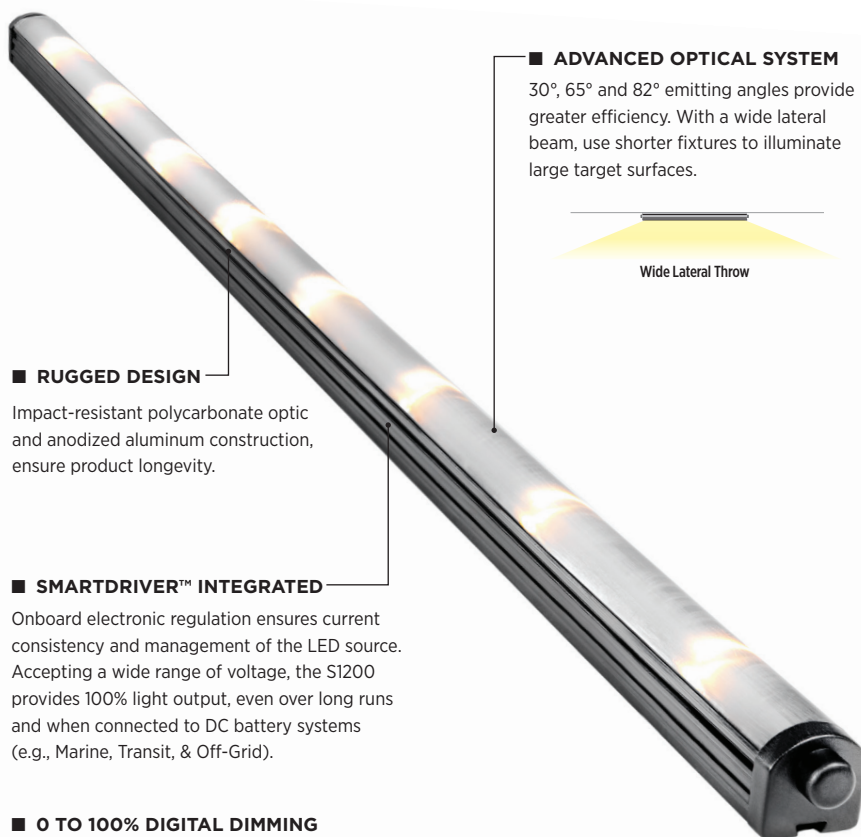
BEAM ANGLES



CERTIFICATIONS



Features



■ ADVANCED OPTICAL SYSTEM

30°, 65° and 82° emitting angles provide greater efficiency. With a wide lateral beam, use shorter fixtures to illuminate large target surfaces.

Wide Lateral Throw

■ RUGGED DESIGN

Impact-resistant polycarbonate optic and anodized aluminum construction, ensure product longevity.

■ SMARTDRIVER™ INTEGRATED

Onboard electronic regulation ensures current consistency and management of the LED source. Accepting a wide range of voltage, the S1200 provides 100% light output, even over long runs and when connected to DC battery systems (e.g., Marine, Transit, & Off-Grid).

■ 0 TO 100% DIGITAL DIMMING

Connection with i2Systems LightLink dimmers allows simple dimming control in order to optimize lighting effects and dim to low levels without flicker.

■ ACTIVE THERMAL MANAGEMENT

The S1200 fixture will dim upon overheating, protecting the LEDs and your investment.

■ FLEXIBLE MOUNTING OPTIONS

Stainless Steel brackets (not shown) are available in adjustable or fixed options (see next page). Snap-on design allows installation to any position along the fixture.

SPECIFICATIONS

ITEM	PARAMETER	VALUE
Electrical	Input Power	6 Watts / Ft.*
	Input Voltage Range	9-30V DC
	Integrated Driver	✓
	0-100% Dimming	✓
	Protection Features	Active Thermal Management, Protected Dim Line, Transient Protection, Reverse Polarity, Autoreset Fuse
Optical	Emitting Angle	30°, 65°, 82°
	LED Color	Cool White, Neutral White, Warm White, Green, Blue, Red
	LED Colors per Fixture	1
	Class	Class 2 LED Product
Physical	Dimensions	Refer to drawings on right
	Housing Construction	Aluminum
	Lens Material	Polycarbonate
	Lengths	12", 18", 24", 36", 48"
	Finishes	Black
	Mounting Method	Snap, End or Dovetail
	Operating Temp. Range	-20°C to 40°C, Max. Case Temp (T _C): 50°C
	Humidity	0 to 95%, non-condensing
	Environment	Dry, Damp
	Certification	FCC Part 15, cULus (US & Canada), RoHS Compliant

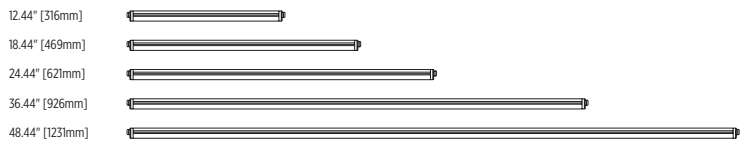
*Due to constant power design, input current (I_{in}) will vary depending on input voltage. Be sure to size wire awg accordingly for worst case input voltage.

ACCESSORIES

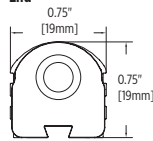
KEYWORD	ITEM NUMBER	DESCRIPTION	FIXTURE MAX
Adjustable Mounting Bracket	SLA-1	Stainless Steel Adjustable Mounting Bracket w/ Stainless Steel Mounting Screw, Snap On Installation to Fixture Housing.	Use 3 for 48", 2 for all others
Fixed Mounting Bracket	SLA-2	Stainless Steel Fixed Mounting Bracket w/ Stainless Steel Mounting Screw, Snap On Installation to Fixture Housing.	Use 3 for 48", 2 for all others
Pivot Mounting Bracket	SLA-3	Stainless Steel Mounting bracket w/ Stainless Steel Mounting Screw, End Mount and Pivot Rotation.	Use 2 for all models
LightLink LL-101	LL-101 Series	Dimming Controller, Multiple Interfaces, including Momentary (MOM) Switch Interface.	Dims up to 20 Feet of S1200
LightLink LL-105-R	LL-105-R Series	Dimming Controller, Multiple Interfaces including 0 to 10V Control.	Dims up to 50 Feet of S1200
LightLink LL-205	LL-205 Series	Dimming Controller, Interfaces with Incandescent Type Triac Dimmers.	Dims up to 50 Feet of S1200
E05 Power Box, 75W	PS24V75W-E05	Power Box, 75W, 120/240/277VAC Input, 24VDC Output, Steel Enclosure.	Powers up to 12 Feet of S1200
E01D Power Box, 45W	PS24V45W-E01D	Power Box, 45W, 120/240VAC Input, 24VDC Output, Steel Enclosure w/ Knockouts and Terminal Blocks.	Powers up to 7 Feet of S1200
E01D Power Box, 75W	PS24V75W-E01D	Power Box, 75W, 120/240VAC Input, 24VDC Output, Steel Enclosure w/ Knockouts and Terminal Blocks.	Powers up to 12 Feet of S1200
E01D Power Box, 120W	PS24V120W-E01D	Power Box, 120W, 120/240/277VAC Input, 24VDC Output, Steel Enclosure w/ Knockouts and Terminal Blocks.	Powers up to 20 Feet of S1200
OEM Power Supply, 100W	PS24V100W-01	Power Supply, 100W, 120/240/277VAC Input, 24VDC Output.	Powers up to 12 Feet of S1200

DIMENSIONS

Lengths



End



WIRE FUNCTION



Included cable is 6 feet in length.

MOUNTING

SLA-1: Adjustable Mounting Bracket



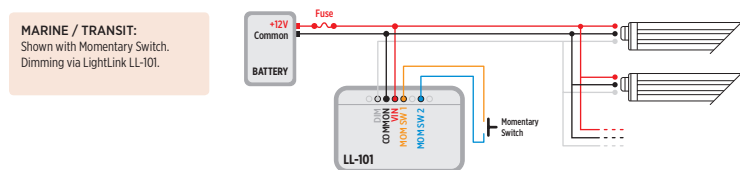
SLA-2: Fixed Mounting Bracket



SLA-3: Pivot Mounting Bracket



SIMPLE WIRING EXAMPLE



MARINE / TRANSIT:
Shown with Momentary Switch.
Dimming via LightLink LL-101.

BUILDING A 120V AC LED LINEAR LIGHTING SYSTEM

Baseline System



ORDERING NUMBER

FACTORY NUMBER EXAMPLE: **S1200A-26CAB**
USER SELECTED OPTION 24" Length, 65° Beam Angle, Warm White LED

S1200A	-	*	*	*	XXX
Product Type	Length	Beam Angle	LED Color	Color Bin Code	
	12"	30°	○ A Cool White		
	8 18"	6 65°	○ B Neutral White		
	2 24"	8 82°	○ C Warm White		
	3 36"		● D Green		
	4 48"		● E Blue		
			● H Red		