

# compose COVE

TYPE: \_\_\_\_\_

High-Efficiency Linear Asymmetrical LED Light Fixture  
for Indirect General Illumination

**Dry Wall Mounting – Built-In**



## ELECTRICAL SPECIFICATIONS

- Input Voltage: 120 - 277 VAC, 50 / 60 Hz
- Input Power: 5 W - 12 W Factory Programmable
- Max. run length: 8 Watts 60 Ft @ 120 VAC  
100 Ft @ 208 VAC, 240 VAC, 277 VAC
- Temperature: Startup/Operating: -20°C to +40°C  
Storage: -30°C to +60°C  
Relative Humidity: 10 - 90% (*non-condensing*)
- Dimming: 10% to 100% via 0 - 10 VDC
- Life: 50,000 hours to L70



## MECHANICAL/INSTALLATION

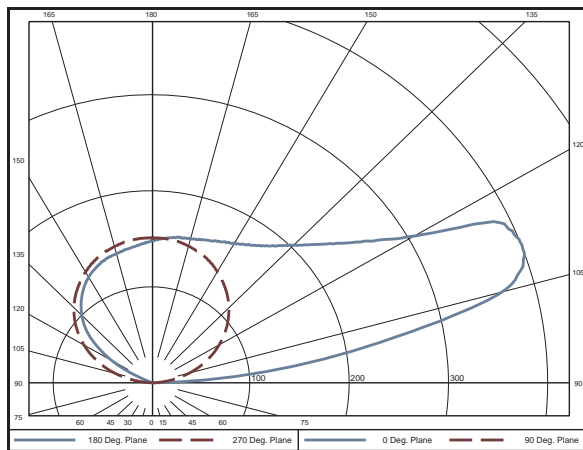
- Plug-and-play design allows for any combination of 1, 1.5 and 4 foot modules to be installed for up to 100' from a single power feed.
- Luminaires can be installed in a variety of configurations: linearly, around corners, or in curved installations. Both inside and outside Corner Units are available for continuous light. Lit, striation-free corners.
- Prefabricated cove mounting channel reduces installation time and cost, while keeping the small form factor.
- Easily connects to the building's power source (100 - 277 VAC, 50 / 60 Hz) via entry cable provided.
- Check out compose ACT and compose WALL mounting systems also available.

## OPTICAL SYSTEM

- LED CRI: Minimum 80; Typical 82 (*90+ available*)
- Efficacy: 96.5 lm / Watt
- High quality LEDs and strict binning controls insure color consistency and long-lasting performance.
- Individually serialized units provide photometric traceability.
- 2-Step MacAdam Ellipse
- Individually serialized units for photometric traceability.

## POLAR PLOT

120° Beam Angle 96.5 lm / W



## 3000K LUMEN DATA

System Watts/Ft	Delivered Lumens/Ft	
	82 CRI	92 CRI
5	483	386
6	579	463
7	676	540
8	772	618
9	869	695
10	965	772
11	1062	849
12	1158	926

Output Factors	
CCT	Multiplier
2000K	0.75
2700K	0.96
3000K	1
3500K	1.03
4000K	1.05

*Other CCTs available.  
LED Color Consistency within  
2-Step MacAdam Ellipse*

## PART NUMBER BUILDER

SERIES	MOUNTING	STYLE	LED CCT	POWER	LENGTH <i>Straight runs</i>
CP Compose	C Cove	F Flat Front K Knife Edge	22K 2200 K	05W 5 Watts	____ FT  <i>Specify total length in feet.</i>
			27K 2700 K	06W 6 Watts	
			30K 3000 K	07W 7 Watts	
			35K 3500 K	08W 8 Watts	
			40K 4000 K	09W 9 Watts	
				10W 10 Watts	
	11W 11 Watts				
	12W 12 Watts				

- OR -

CORNER TYPE
CI Inside
CO Outside

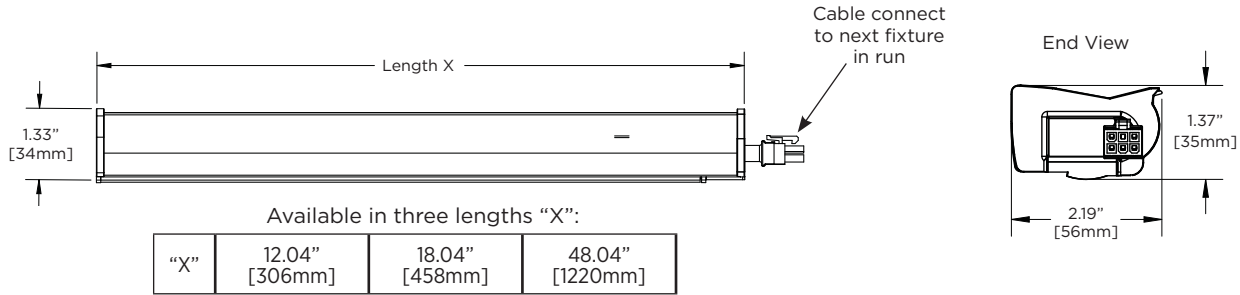
## ACCESSORIES

CABLES	
CP-PE-120IN	Power Entry, 120"
END CAPS	
CPC-F-END	Flat Front
CPC-K-END	Knife Edge

High-Efficiency Linear Asymmetrical LED Light Fixture for Indirect General Illumination

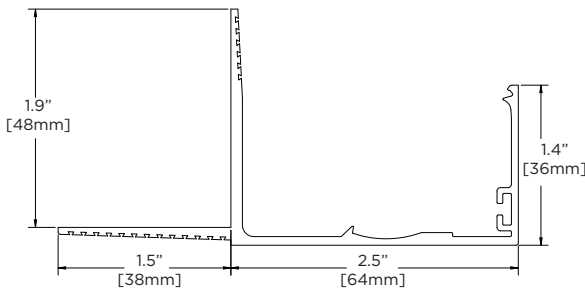
Dry Wall Mounting - Built-In

### COVE CARTRIDGE DIMENSIONS

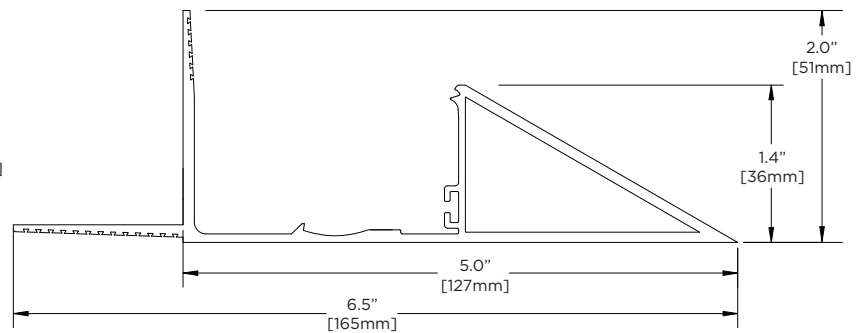


### PROFILE OPTIONS

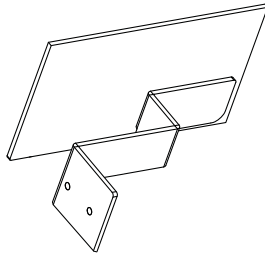
#### Flat Front



#### Knife Edge

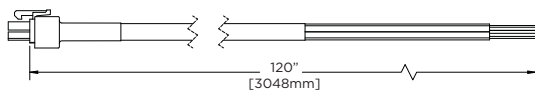


End Caps are available for each profile type. **Flat Front** shown below.



### CABLE OPTIONS

Power Entry Cable CP-PE-120IN (includes plastic end cap)



#### Wire Colors

BLACK - Line  
 WHITE - Neutral  
 GREEN - Ground  
 GRAY - Dimming (-)  
 VIOLET - Dimming (+)

*NOTE: When unpacking the Power Entry Cable, set aside the black plastic cap. This cap will be needed cap to end of the run.*

High-Efficiency Linear Asymmetrical LED Light Fixture for Indirect General Illumination

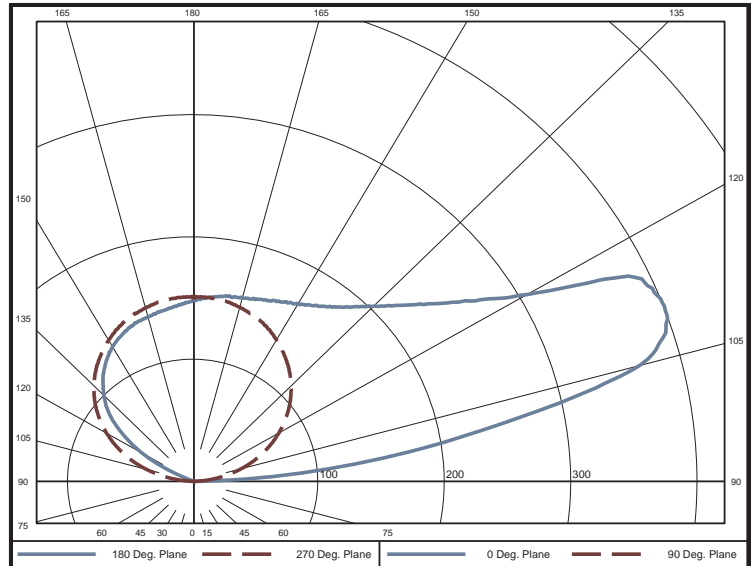
Dry Wall Mounting - Built-In

## PHOTOMETRICS

### compose COVE 3000K, 1ft, 8W

Integrating Sphere	
Luminous Flux	699 Lumens
Efficacy	96.5 lm/W
CCT	2905 K
CRI (Ra)	82.8
Electrical Data at 120 VAC	
Test Temperature	24.5 °C
Voltage	120.0 VAC
Current	0.06300 A
Power	7.250 W
Power Factor	0.956
Frequency	60 Hz
Current THD	20.0%

### compose COVE Polar Plot



## Zonal Lumen Summary

Zone	Lumens	% of Luminaire	Zone	Lumens	% of Luminaire	Zone	Lumens	% of Luminaire
0-5	0	0.0%	60-65	0.01	0.0%	120-125	57.59	8.40%
5-10	0	0.0%	65-70	0.04	0.0%	125-130	54.90	8.0%
10-15	0	0.0%	70-75	0.09	0.0%	130-135	52.08	7.6%
15-20	0	0.0%	75-80	0.17	0.0%	135-140	48.83	7.2%
20-25	0	0.0%	80-85	0.27	0.0%	140-145	45.07	6.6%
25-30	0	0.0%	85-90	0.41	0.1%	145-150	40.72	6.0%
30-35	0	0.0%	90-95	5.68	0.8%	150-155	35.77	5.2%
35-40	0	0.0%	95-100	24.81	3.6%	155-160	30.18	4.4%
40-45	0	0.0%	100-105	46.16	6.8%	160-165	24.01	3.5%
45-50	0	0.0%	105-110	58.37	8.5%	165-170	17.47	2.6%
50-55	0	0.0%	110-115	63.81	9.3%	170-175	10.62	1.6%
55-60	0.00	0.0%	115-120	62.05	9.1%	175-180	3.56	0.5%

## CERTIFICATIONS

UL (US & Canada)  
FCC  
RoHS  
Made in the USA

