



Gen2™

An architectural-grade, wet-location LED luminaire engineered for the illumination and grazing of walls and surfaces, with perfect continuous light and plug-together design.



▶ FEATURES

- Plug-and-play design allows for any combination of 1, 2, 3 and 4FT modules to be installed for up to 20Ft from a single power feed.
- 1% Low-Level Flicker Free Dimming.
- Active Thermal Management Monitors Fixture Case Temperature and Discreetly Dims Fixture Upon Signs of Possible Overheat.
- SmartDriver Technology Integrated in Every Fixture, Maintaining Continuous Output Regardless of Voltage Drop, Temperature or Voltage Fluctuations.
- Actively Managed ANSI Sub-Binning to Ensure Accurate and Consistent Color Matching for Each Fixture.

▶ PHYSICAL

- Mil-Spec Anodized Aluminum Housing/UV Resistant Acrylic Lens.
- Weight: 1Ft: 1.7 lbs, 2Ft: 3.1 lbs, 3Ft: 4.5 lbs, 4Ft: 5.7 lbs.
- Protection Rating: IP66
- Warranty: 3 Years

▶ ELECTRICAL SPECIFICATIONS

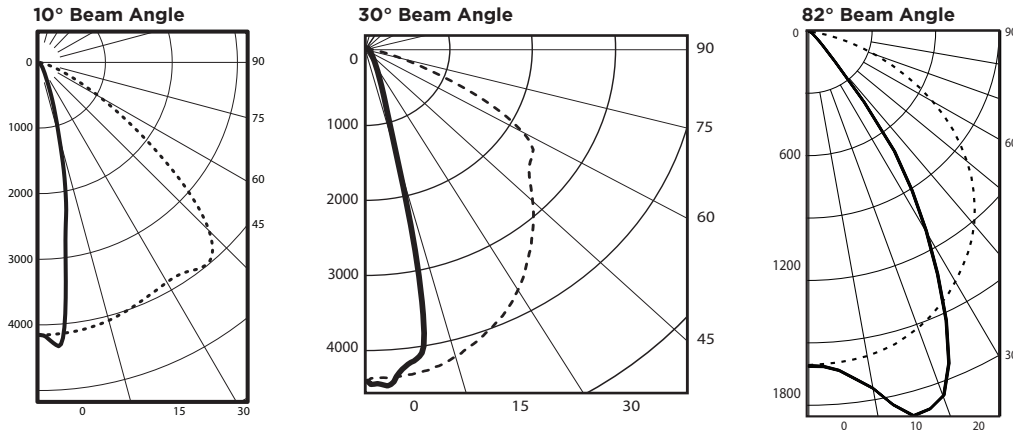
Input Voltage	20-30V DC Use with E10PW280W/560W
Input Power	7W/FT-14W/FT, For More Wattage Options Contact Factory
Max. Load	20Ft @ 14W/FT & 40Ft @ 7W/FT
Max. Wire Distance	50Ft from Last Light to Power Box using 12 AWG
Temperature	Startup /Operating: -20°C to +40°C Relative Humidity: 0-95% (non-condensing)
Dimming	1% via 0 - 10 VDC
Life	60,000 hours to L70



▶ PERFORMANCE

EFFICACY: **68lms/W High Output, 14W/FT**

POLAR PLOT ——— 0 Deg. Plane - - - - - 90 Deg. Plane



▶ LED MODULE PART CODE TABLE

Product	Output	Length	Beam Angle	LED Color	Location	Finish
V2355						
	A = 14W/FT	1 = 12.57"	1 = 10°	CBA = 2700K	Blank = Outdoor	Blank = Black Anodize
	B = 07W/FT	2 = 24.38"	3 = 30°	CBB = 3000K	1 = Indoor	2 = Clear Anodize
		3 = 36.19"	8 = 82°	CBC = 3500K		3 = White
		4 = 48.00"		BBD = 4000K		C = Custom*
V2355				BBE = 4500K		
				AAF = 5000K		
				AAG = 5700K		
				AAH = 6500K		

+For More Wattage Options Contact Factory
EXAMPLE: V2355A-11CBB

*For Additional Colors Including Solid Colors Contact Factory





Gen2™

An architectural-grade, wet-location LED luminaire engineered for the illumination and grazing of walls and surfaces, with perfect continuous light and plug-together design.



ACTIVE-THERMAL
MANAGEMENT



PATENTED
OPTICS



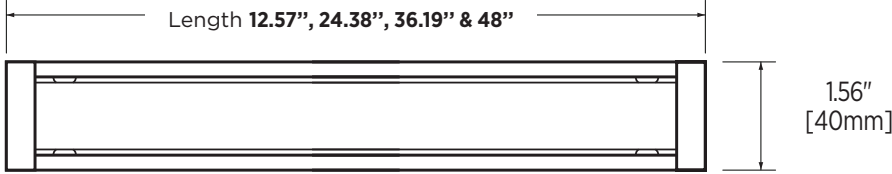
AL
ALUMINUM
HOUSING



WATERPROOF

▶ LED MODULE DIMENSIONS

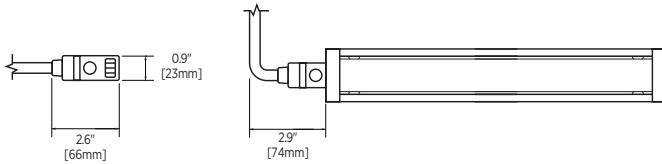
Available in 4 lengths "A":



▶ SELECT ALL THAT APPLY

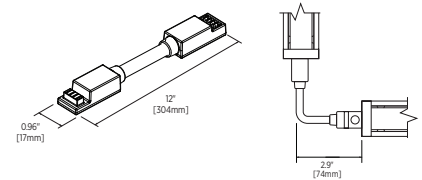
▶ CABLE OPTIONS

Power Input Straight Cable: VLAK2-C1-06

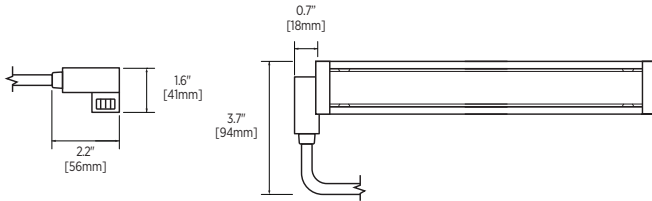


▶ EXTENSION CABLES VLAK2-C2-xx

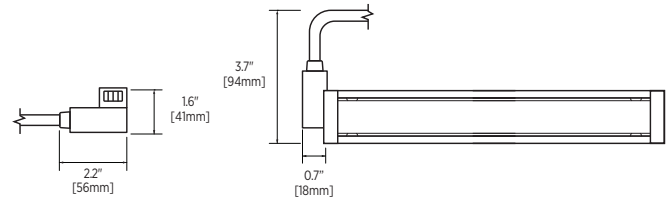
- 06" VLAK2-C2-61N
- 12" VLAK2-C2-01
- 24" VLAK2-C2-02
- 36" VLAK2-C2-03
- 72" VLAK2-C2-06
- 120" VLAK2-C2-10
- 240" VLAK2-C2-20
- 360" VLAK2-C2-30



Power Input Right Angle Cable: VLAK2-C1-06R

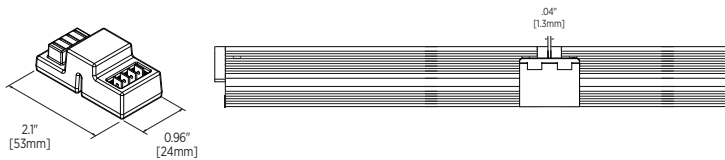


Power Input Left Angle Cable: VLAK2-C1-06L

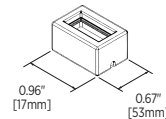


▶ STRAIGHT CONNECTOR

End-to-End Jumper: VLAK2-J1



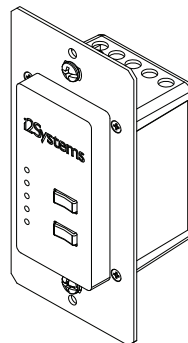
End Plug: VLAK2-P1
(Required for Terminating LED Module)



▶ DIMMING CONTROL

LightLink: LL-205-10V

Indoor Dimming Cable: 685-01561-100
Outdoor Dimming Cable: 685-02026-100

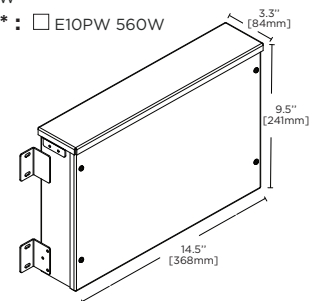


▶ POWER BOXES

280W Power Box*: E10PW 280W
560W Dual Output Power Box**: E10PW 560W

*Powers up to 20 Ft of Gen2 HO, 40 Ft of Gen2 SO

**Powers up to 40 Feet of Gen2 HO (2 runs of 20 Ft) and 80 Ft of Gen2 SO (2 runs of 40 Ft).



Integrated Illumination Systems, Inc.
355 Bantam Lake Road
Morris, CT 06763 USA

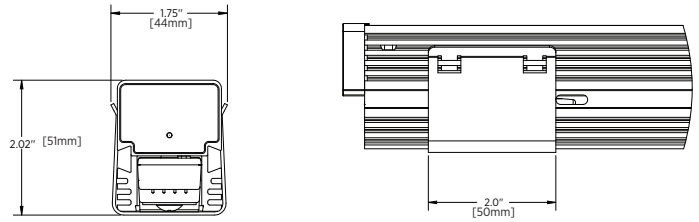
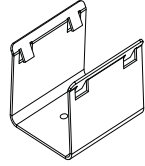
tel +1.860.567.0708
sales@i2systems.com

Product information is subject to change without notice.
All brand names and product names are trademarks of i2Systems.
© 2019 i2Systems. All Rights Reserved.

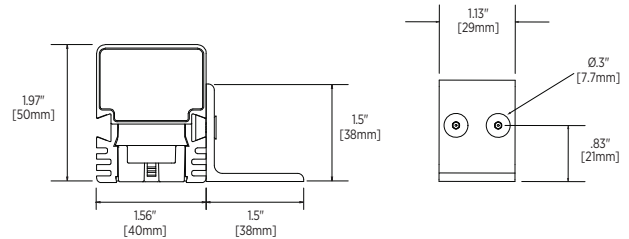
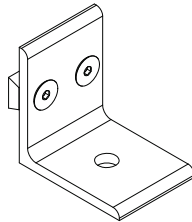
www.i2systems.com
RevB
Page 2 of 3

► **BRACKETS**

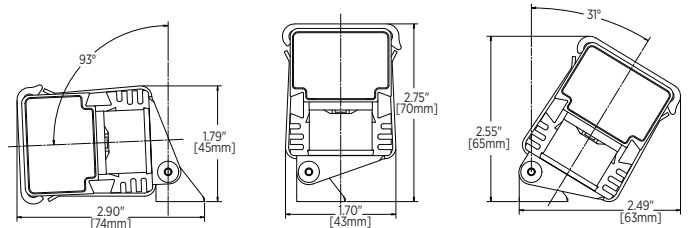
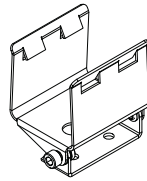
Fixed U Clip □ VLA-20



Fixed L Clip □ VLA-9



Adjustable U Clip □ VLA-17



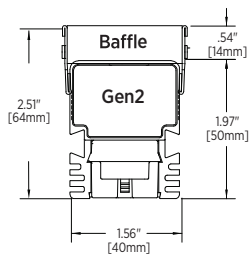
► **ACCESSORIES**

□ **Baffle Black** □ 810-02305-xxB

- 12": ___810-02305-12B
- 24": ___810-02305-24B
- 36": ___810-02305-36B
- 48": ___810-02305-48B

□ **Baffle White** □ 810-02305-xxW

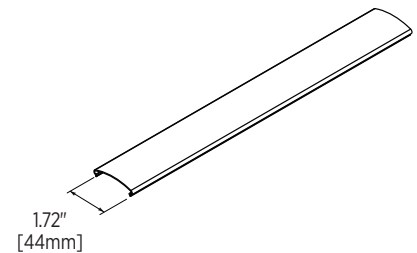
- 12": ___810-02305-12W
- 24": ___810-02305-24W
- 36": ___810-02305-36W
- 48": ___810-02305-48W



► **ACCESSORIES**

Debris Guard □ V2-DBG-xx

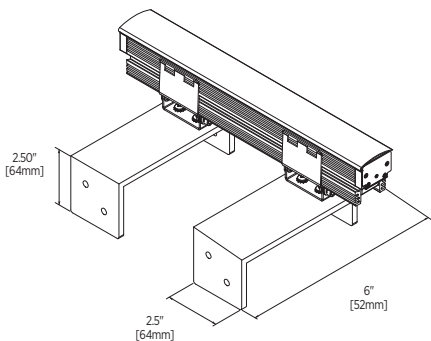
- 12": ___V2-DBG-12
- 24": ___V2-DBG-24
- 36": ___V2-DBG-36
- 48": ___V2-DBG-48



► **ACCESSORIES**

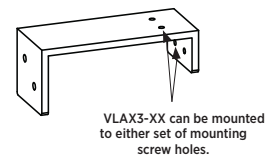
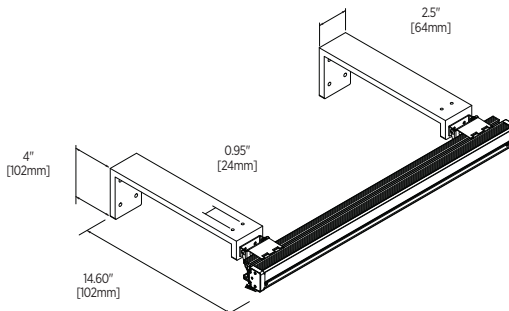
6" Extension Arm: □ VLAX3-6

PROVIDED WITH VLA-17



12" Extension Arm: □ VLAX3-12

PROVIDED WITH VLA-17



VLAX3-XX can be mounted to either set of mounting screw holes.