

Compose WALL MOUNT

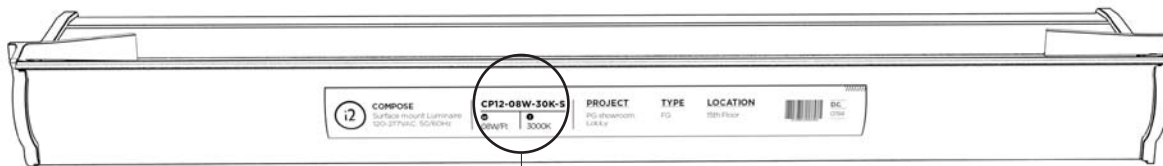
Installation Instructions





WARNING

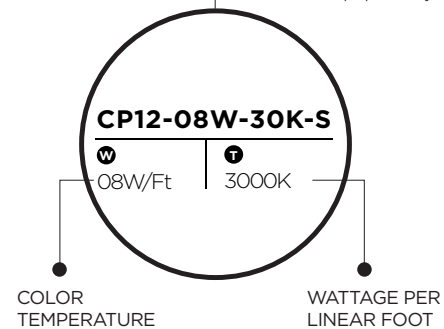
- Installation wall must have continuous blocking behind drywall for the entire length of the extruded cove.
- Wall for installation should be +/- 1/16" true plumb across 48" of the planar surface.
- For installations using a corner, the corner MUST be installed before the straight sections. Work away from the corners and field cut straight sections as needed.
- A right angle power entry cable is required when any row of lights is interrupted by a power entry.
- Ensure that main power is off prior to installing or wiring a LED module.
- Risk of fire or electric shock. System must be installed by a qualified electrician according to local and national codes.
- Do not expose wiring to edges of sheet metal or other sharp objects.
- LED module is not field serviceable.
- Connect to a properly grounded branch circuit protected by a circuit breaker or fuse.
- This LED module requires temperature conditions within the range of **-20°C (Min) and 50°C (Max)**
- Avoid making live connections, also known as hot swapping.
- For use on systems with voltages greater than the maximum rated voltage, use a safety agency approved, step-down transformer to convert the higher voltage to a voltage within the specified operating range of the LED module.
- Power input cable provided by i2Systems is 10' long, therefore, the junction box (supplied by others) must be installed within 10' feet of the first light.



For illustration purposes only.

Use the chart below to calculate maximum run length from single power feed. Add power feed as needed.

Input Voltage	5W Max. Run Allowable	8W Max. Run Allowable	10W Max. Run Allowable	12W Max. Run Allowable
120 VAC	100 ft	60 ft	50 ft	40 ft
208VAC	100 ft	100 ft	80 ft	70 ft
240VAC	100 ft	100 ft	100 ft	80 ft
277 VAC	100 ft	100 ft	100 ft	90 ft



CAUTION

Exceeding the input voltage or acceptable LED module run lengths will result in damage to the LED module and may pose a serious safety hazard.



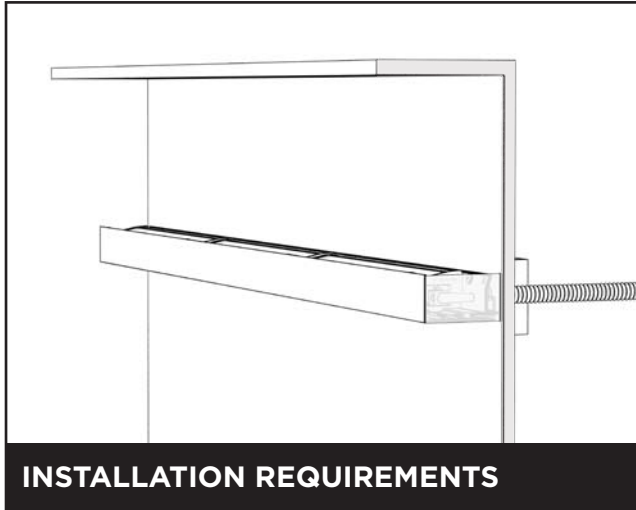
APPLICATION

This is a dry location product only. Do not place in wet or exterior applications.

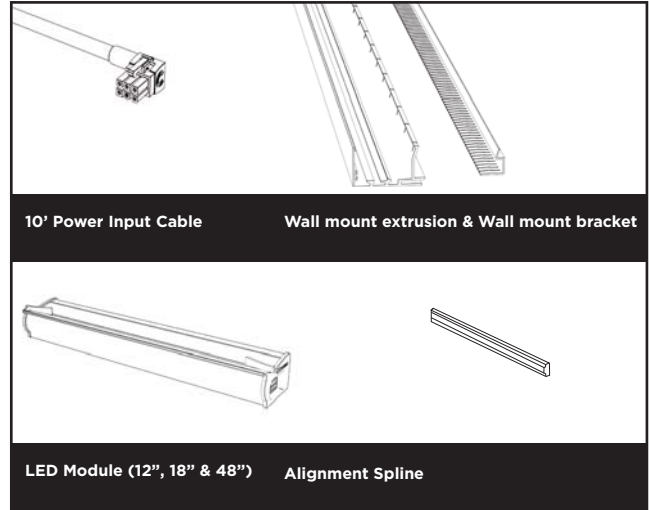


CUSTOMER SUPPORT

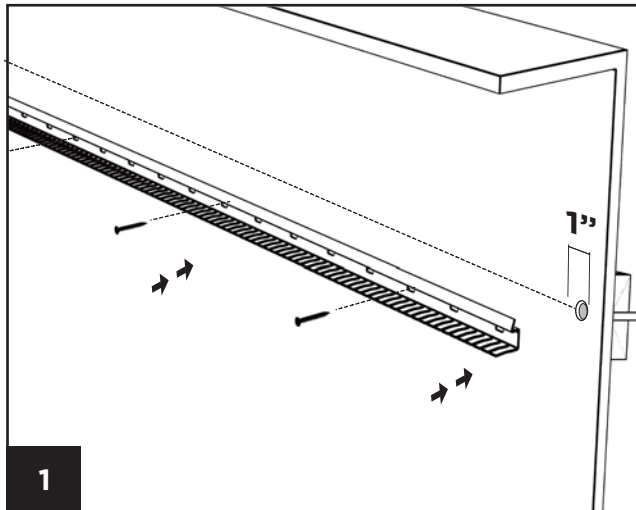
For Technical Support, contact us between 8 a.m. and 5 p.m. EST by phone at **1.860.567.0708** or email at support@i2systems.com.



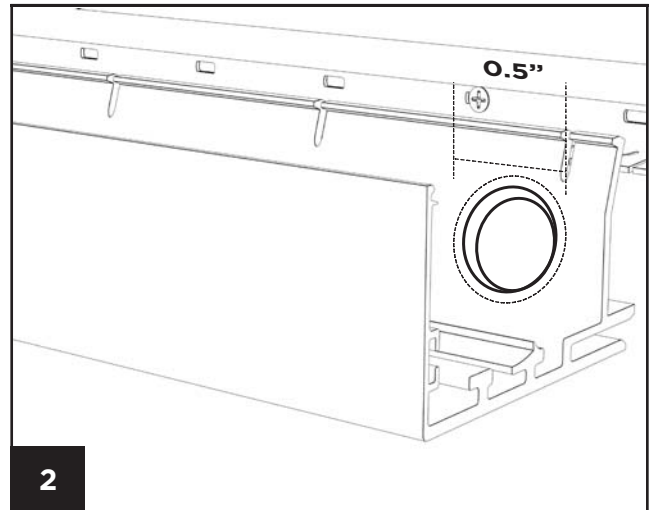
Minimum height from floor must comply with ADA requirements.
 If install is not a straight run, start from the corners.
 Wall mount extrusion is field cuttable and paintable.



Required components.
 Allen Key is provided with the installation kit.



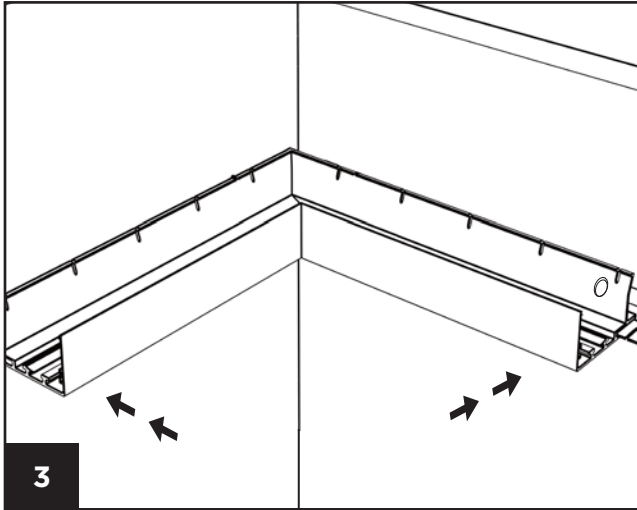
Determine cable entry location based on field conditions.
 Position mount where angle is at the top and teeth are at the bottom and facing towards you.
 Screw through the wall mount to desired location.



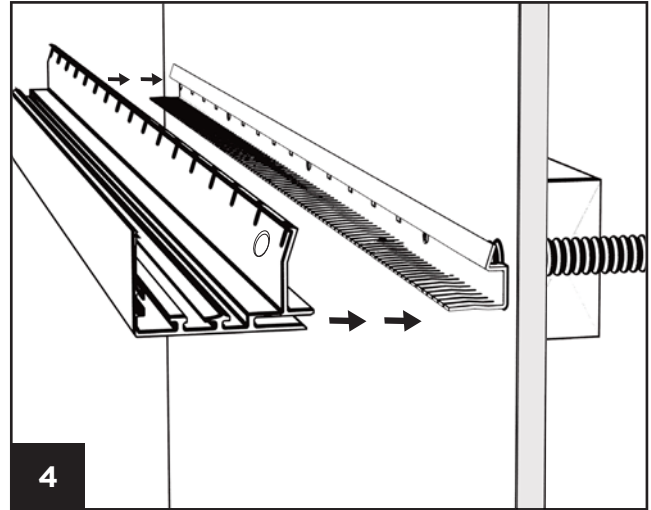
Drill a 1" hole in wall for cable access so that cable can be connected to building wiring.

For straight runs, pre-drill a 0.5" power entry hole in extrusion, as needed, so that it falls between modules and install an armored cable connector prior to mounting to the wall.

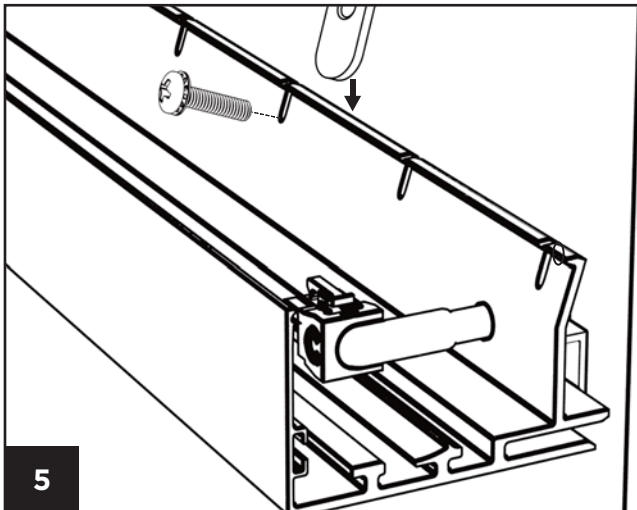
Unless specified, wall mount extrusion is unfinished.



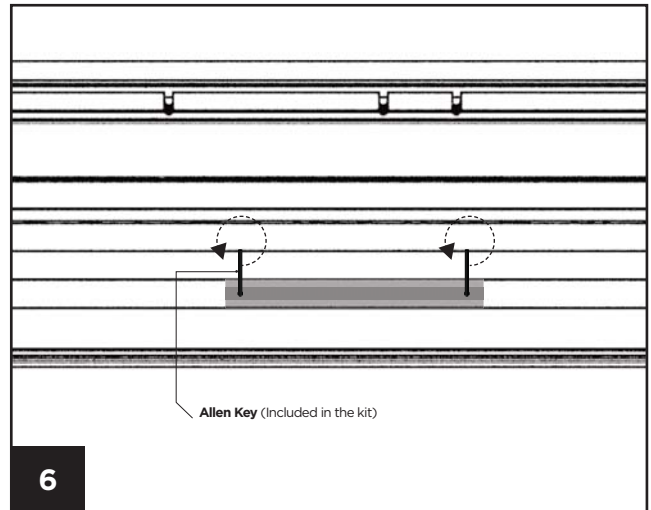
3
Install all corners first if applicable.



4
Install connector to BX cable lines.
Install first extrusion to mount, if extrusion has power entry, install connector to pre drilled hole.

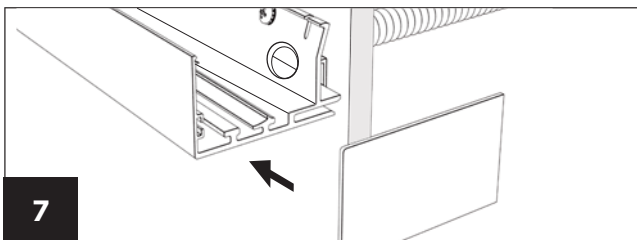


5
Insert clip assembly (included) into slots between wall mount extrusions and drywall so that the clip engages mount and head of screw is positioned below lip.

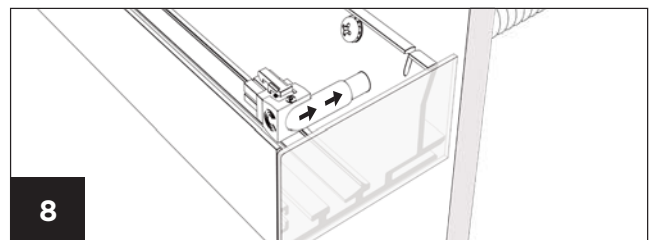


6
Slide spline (included) into first extrusion and install following extrusions to left of first as needed. **Begin with the corners.**

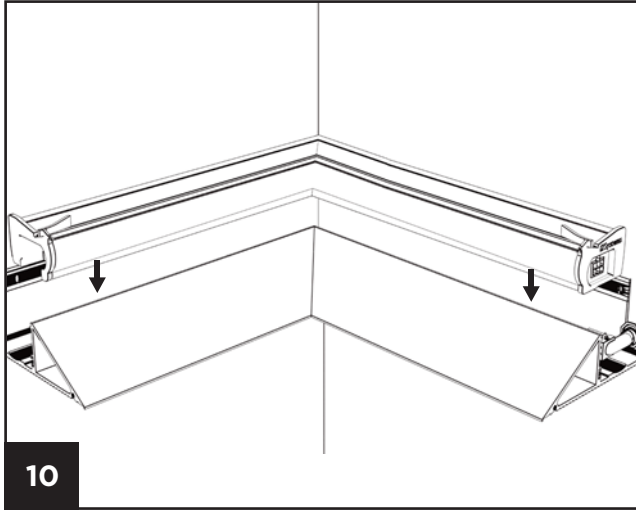
Be sure there is no gap between extrusions.



7
Install endcaps on the Wall mount extrusion.
Proceed to paint (if required)



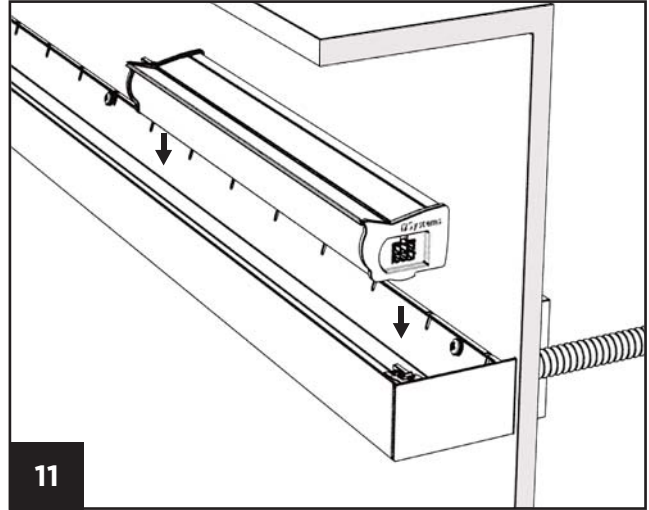
8
Insert Power input cable



10

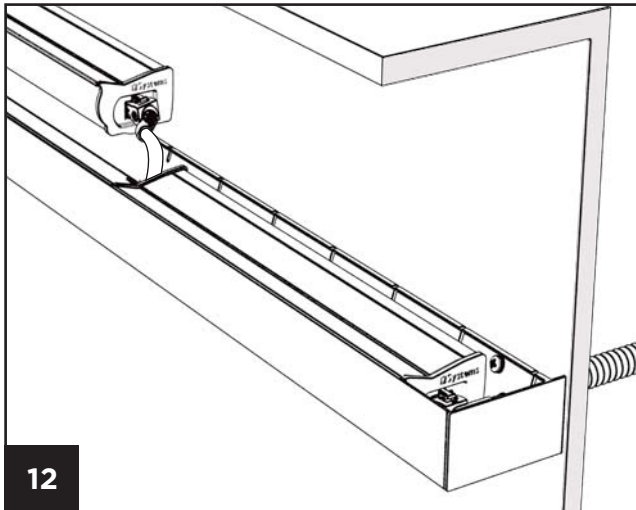
Follow the layout of the shop drawings provided.

All corner modules must be installed first. Cut straight sections to length as needed, apply splines to each section, apply power to required sections.



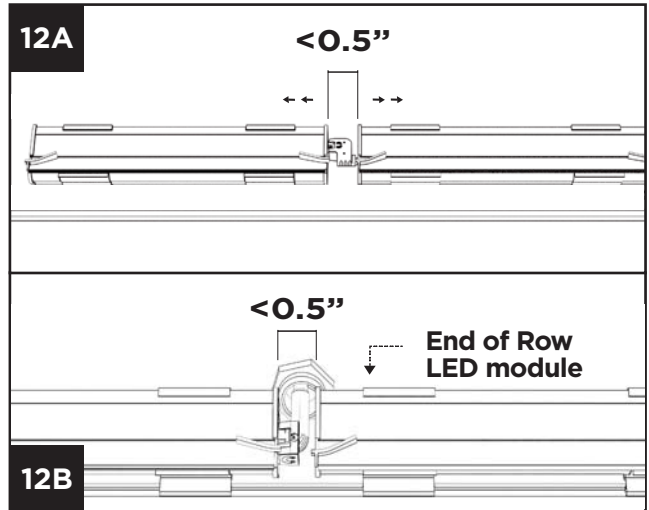
11

Starting from the right, connect the first LED module in the run.



12

Connect the remaining LED modules in the run to the LED modules next to it. Repeat the process until they are all connected.



12A

<0.5"

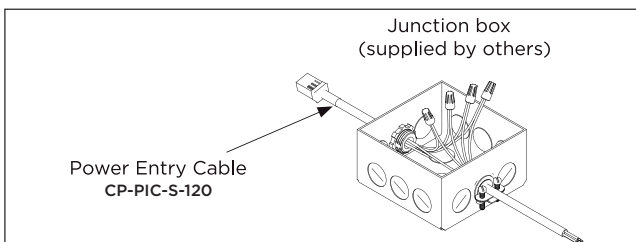
12B

End of Row LED module

12A Gap between fixtures should not exceed 0.5".

12B Use an End of Row LED module for runs that require more than one power input cable and at the end of the last run.

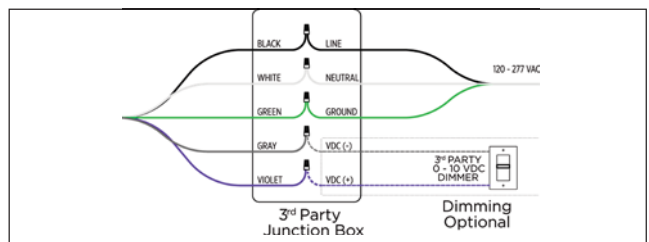
Plug power input cable into first LED module.



Junction box (supplied by others)

Power Entry Cable CP-PIC-S-120

JUNCTION BOX PROVIDED BY OTHERS



WIRING DIAGRAM