



# S-Line S1200

## LED Linear Light for General Lighting

PATENTS  
PENDING

Visit [www.i2systems.com](http://www.i2systems.com) for a detailed list of Applications.

### PRODUCT HIGHLIGHTS

- 6 Watts / Ft.
- 9-30V DC Input
- 0 to 100% Dimming
- 12", 18", 24", 36", 48" Lengths
- 30°, 65°, 82° Emitting Angles
- Polycarbonate Optic
- Flexible Mounting Options

### TYPICAL APPLICATIONS

- Architectural Lighting
- Retail / Display Lighting
- Elevator / Escalator Lighting
- Industrial Products Lighting
- Refrigeration / Food Service
- Transportation / Marine

## SPECIFICATIONS

### SUITABLE ENVIRONMENTS



Dry Damp

### LED COLORS

- Cool White
- Neutral White
- Warm White
- Green
- Blue
- Red

### FINISH



Black

### LENGTHS



### BEAM ANGLES



### CERTIFICATIONS



## Features

### ■ ADVANCED OPTICAL SYSTEM

Three emitting angle options for precise light. Wide lateral distribution and advanced optical design provide uniform light distribution.

### ■ 0 TO 100% DIGITAL DIMMING

Connection with i2Systems LightLink Series allows simple and seamless integration to most of today's conventional dimming systems.

### ■ RUGGED DESIGN

Impact resistant polycarbonate optic / housing, anodized aluminum construction, and electronic regulation to the LED source ensure product longevity.

### ■ NO HEAT OR UV IN THE LIGHT BEAM

With no heat in the light beam, the fixture lens remains much cooler than halogen sources, allowing safe and 'burn free' operation. In addition, no UV means reduced risk of fading or deteriorating products or artifacts on display.

### ■ FLEXIBLE MOUNTING OPTIONS

Stainless Steel brackets are available in adjustable or fixed options. Snap on design allows installation to any position along the fixture.

## Exclusive Technology

### ■ ACTIVE THERMAL MANAGEMENT

Active Thermal Management (ATM) continuously monitors, and when required, thermally regulates the fixture. If for any reason the fixture begins to overheat, ATM will reduce the LED power level in order to protect the LED source. Smooth dimming ensures this background task does not interfere with normal operation of the fixture.

### ■ SMARTDRIVER™ INTEGRATED

i2Systems SmartDriver technology is integrated directly inside of every fixture. Connect the S-Line to a wide range of voltages without sacrificing light output or lifetime. No external drivers are required and wiring is made simple.

### ■ ACCUWHITE™

i2Systems AccuWhite technology allows integration of S-Line fixtures to traditional applications without sacrifice in color temperature (CCT) or color rendering (CRI). AccuWhite ensures accurate and consistent color matching from fixture to fixture and across product lines.

### ■ LIGHTLINK™ COMPATIBLE

i2Systems LightLink controllers represent the next generation in lighting control and connectivity. LightLink modules provide seamless integration of today's commercial and residential dimming systems through a wide variety of desirable interfaces.

### ■ MULTIPLEX COMPATIBLE

Without external controllers, fixture is Multiplex compatible, interfacing directly to most Multiplex type dimming systems, including Eplex® and Moritz Octoplex™ systems.

Eplex® is a registered trademark of ED&D Technologies.  
Moritz Octoplex™ is a trademark of Moritz Aerospace.

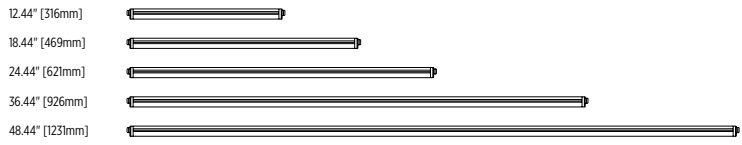
## SPECIFICATIONS

ITEM	PARAMETER	VALUE
<b>Electrical</b>	Input Power	6 Watts / Ft.*
	Input Voltage Range	9-30V DC
	Integrated Driver	✓
	0-100% Dimming	✓
	Protection Features	Active Thermal Management, Protected / Isolated Dim Line, Transient Protection, Reverse Polarity, Autoreset Fuse
<b>Optical</b>	Emitting Angle	30°, 65°, 82°
	LED Color	Cool White, Neutral White, Warm White, Green, Blue, Red
	LED Colors per Fixture	1
	Class	Class 2 LED Product
<b>Physical</b>	Dimensions	Refer to drawings on right
	Housing Construction	Aluminum
	Lens Material	Polycarbonate
	Lengths	12", 18", 24", 36", 48"
	Finishes	Black
	Mounting Method	Snap, End or Dovetail
	Operating Temp. Range	-20°C to 40°C, Max. Case Temp (Tc): 50°C
	Humidity	0 to 95%, non-condensing
	Environment	Dry, Damp
	Certification	FCC Part 15, Class B, cULus Pending (US & Canada), NSF Pending, RoHS Compliant

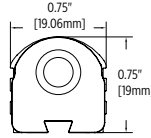
\*Due to constant power design, input current (Iin) will vary depending on input voltage. Be sure to size wire awg accordingly for worst case input voltage.

## DIMENSIONS

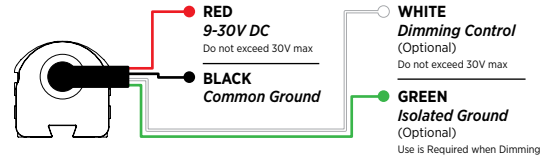
### Lengths



### End



### WIRE FUNCTION



## MOUNTING

### SLA-1: Adjustable Mounting Bracket



### SLA-2: Fixed Mounting Bracket



### SLA-3: Pivot Mounting Bracket



## ACCESSORIES

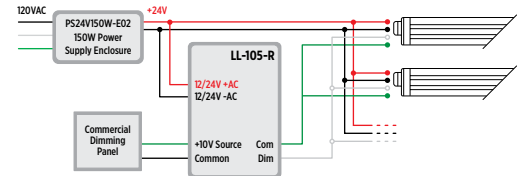
KEYWORD	ITEM NUMBER	DESCRIPTION	FIXTURE MAX
Adjustable Mounting Bracket	SLA-1	Stainless Steel Adjustable Mounting Bracket w/ Stainless Steel Mounting Screw, Snap On Installation to Fixture Housing.	
Fixed Mounting Bracket	SLA-2	Stainless Steel Fixed Mounting Bracket w/ Stainless Steel Mounting Screw, Snap On Installation to Fixture Housing.	
Pivot Mounting Bracket	SLA-3	Stainless Steel Mounting bracket w/ Stainless Steel Mounting Screw, End Mount and Pivot Rotation.	
LightLink LL-101	LL-101 Series	Dimming Controller, Multiple Interfaces, including Momentary (MOM) Switch Interface.	Dims up to 20 Feet of S1200
LightLink LL-105	LL-105 Series	Dimming Controller, Multiple Interfaces including 0 to 10V Control.	Dims up to 50 Feet of S1200
LightLink LL-205	LL-205 Series	Dimming Controller, Multiple Interfaces including 0 to 10V Control.	Dims up to 50 Feet of S1200
75W Power Supply Enclosure	PS24V75W-E05	Power Supply Enclosure, 75W, 120/240/277VAC Input, 24VDC Output, Steel Enclosure.	Powers up to 12 Feet of S1200
45W Power Supply Enclosure	PS24V45W-E01D	Power Supply Enclosure, 45W, 120/240VAC Input, 24VDC Output, Steel Enclosure w/ Knockouts & Terminal Blocks.	Powers up to 7 Feet of S1200
75W Power Supply Enclosure	PS24V75W-E01D	Power Supply Enclosure, 75W, 120/240VAC Input, 24VDC Output, Steel Enclosure w/ Knockouts & Terminal Blocks.	Powers up to 12 Feet of S1200
120W Power Supply Enclosure	PS24V120W-E01D	Power Supply Enclosure, 120W, 120/240/277VAC Input, 24VDC Output, Steel Enclosure w/ Knockouts and Terminal Blocks.	Powers up to 20 Feet of S1200
75W Outdoor Power Supply Enclosure	PS24V75W-E02	Outdoor Power Supply Enclosure, 75W, 120/240/277VAC Input, 24VDC x1 Output, Stainless Steel NEMA 4 Enclosure.	Powers up to 12 Feet of S1200
150W Outdoor Power Supply Enclosure	PS24V150W-E02	Outdoor Power Supply Enclosure, Dual Power Supply, 75W x 2, 120/240/277VAC Input, 24VDC x 2 Output, Stainless Steel NEMA 4 Enclosure.	Powers up to 24 Feet of S1200
48W OEM Power Supply	PS24V48W-01	Power Supply, 48W, 120/240/277VAC Input, 24VDC Output.	Powers up to 6 Feet of S1200
100W OEM Power Supply	PS24V100W-01	Power Supply, 100W, 120/240/277VAC Input, 24VDC Output.	Powers up to 12 Feet of S1200

Battery Backup power supplies are available. Visit [www.i2systems.com](http://www.i2systems.com)

## INSTALLATION EXAMPLES

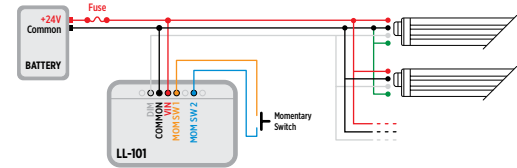
### General Lighting w/ Dimming

EXAMPLE 1:  
Shown with 0 to 10V Dimming via LightLink LL-105-R.



### Transportation Lighting w/ Dimming

EXAMPLE 2:  
Shown with Momentary Switch Dimming via LightLink LL-101.



## ORDERING NUMBER

FIXED FACTORY NUMBER

EXAMPLE: **S1200A-26CXXX**

USER SELECTED OPTION

24" Length, 65° Beam Angle, Warm White LED

**S1200A** - \* \* \* **XXX**

### Length

- 1 12"
- 8 18"
- 2 24"
- 3 36"
- 4 48"

### Beam Angle

- 3 30°
- 6 65°
- 8 82°

### LED Color

- A Cool White
- B Neutral White
- C Warm White
- D Green
- E Blue
- H Red