

LED Linear Light for
Refrigeration & Display Lighting



S-Line S2190

LED Linear Light for Refrigeration & Display Lighting

PATENTS
PENDING

PRODUCT HIGHLIGHTS

- 5 Watts / Ft.
- 24V DC Input
- 22", 44" Lengths
- 30°, 65°, 82° Emitting Angles
- Flexible Mounting Options
- NSF-Certified Option

SPECIFICATIONS

SUITABLE ENVIRONMENTS



Dry Damp

LED COLORS

- Cool White
- Neutral White
- Warm White

FINISH

- Black

LENGTHS



BEAM ANGLES



CERTIFICATIONS



Features



■ ADVANCED OPTICAL SYSTEM

30°, 65° and 82° emitting angles provide greater efficiency. With a wide lateral beam, use shorter fixtures to illuminate large target surfaces.

Wide Lateral Throw

■ RUGGED DESIGN

Impact-resistant polycarbonate optic and anodized aluminum construction, ensure product longevity.

■ FLEXIBLE MOUNTING OPTIONS

Stainless Steel brackets (not shown) are available in adjustable or fixed options (see next page). Snap-on design allows installation to any position along the fixture.

SPECIFICATIONS

ITEM	PARAMETER	VALUE
Electrical	Input Power	5 Watts / Ft.
	Input Voltage Range	23-25V DC
	Protection Features	Transient Protection, Reverse Polarity, Autoreset Fuse
Optical	Emitting Angle	30°, 65°, 82°
	LED Color	Cool White, Neutral White, Warm White
	LED Colors per Fixture	1
	Class	Class 2 LED Product
Physical	Dimensions	Refer to drawings on right
	Housing Construction	Aluminum
	Lens Material	Polycarbonate
	Lengths	22", 44"
	Finishes	Black
	Mounting Method	Snap, End or Dovetail
	Operating Temp. Range	-40°C to 30°C, Max. Case Temp (Tc): 50°C
	Humidity	0 to 95%, non-condensing
	Environment	Dry, Damp
	Certification	FCC Part 15, cULus (US & Canada), RoHS Compliant, NSF (Optional)

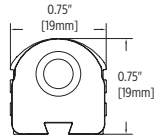
DIMENSIONS

Lengths

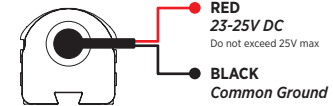
21.75" [551mm]

44.25" [1124mm]

Ends



WIRE FUNCTION



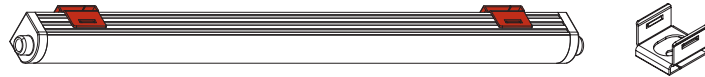
Included cable is 6 feet in length.

MOUNTING

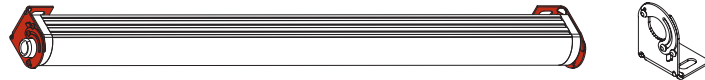
SLA-1: Adjustable Mounting Bracket



SLA-2: Fixed Mounting Bracket



SLA-3: Pivot Mounting Bracket

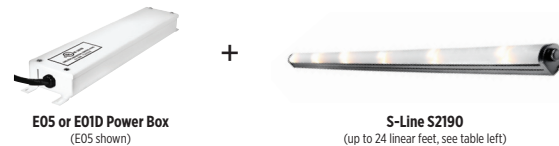


ACCESSORIES

KEYWORD	ITEM NUMBER	DESCRIPTION	FIXTURE MAX
Adjustable Mounting Bracket	SLA-1	Stainless Steel Adjustable Mounting Bracket w/ Stainless Steel Mounting Screw, Snap On Installation to Fixture Housing.	Use 2 for 22", 3 for 44"
Fixed Mounting Bracket	SLA-2	Stainless Steel Fixed Mounting Bracket w/ Stainless Steel Mounting Screw, Snap On Installation to Fixture Housing.	Use 2 for 22", 3 for 44"
Pivot Mounting Bracket	SLA-3	Stainless Steel Mounting bracket w/ Stainless Steel Mounting Screw, End Mount and Pivot Rotation.	Use 2 for all models
E05 Power Box, 75W	PS24V75W-E05	Power Box 75W, 120/240/277VAC Input, 24VDC Output, Steel Enclosure.	Powers up to 15 Feet of S2190
E01D Power Box, 45W	PS24V45W-E01D	Power Box, 45W, 120/240VAC Input, 24VDC Output, Steel Enclosure w/ Knockouts and Terminal Blocks.	Powers up to 9 Feet of S2190
E01D Power Box, 75W	PS24V75W-E01D	Power Box, 75W, 120/240VAC Input, 24VDC Output, Steel Enclosure w/ Knockouts and Terminal Blocks.	Powers up to 15 Feet of S2190
E01D Power Box, 120W	PS24V120W-E01D	Power Box, 120W, 120/240/277VAC Input, 24VDC Output, Steel Enclosure w/ Knockouts and Terminal Blocks.	Powers up to 24 Feet of S2190
OEM Power Supply, 100W	PS24V100W-01	Power Supply, 100W, 120/240/277VAC Input, 24VDC Output.	Powers up to 15 Feet of S2190

BUILDING AN LED LINEAR LIGHTING SYSTEM

Baseline System



Need dimming? Refer to S-Line S1200 Series.

BASIC WIRING EXAMPLE:
2 S2190 S-Lines powered via
24V DC power system.

ORDERING NUMBER

FACTORY NUMBER

EXAMPLE: **S2190Z-26CAB**

USER SELECTED OPTION

22" Length, 65° Beam Angle, Warm White LED

S2190Z

-

*

*

*

XXX

Product Type

Length

2 22"

4 44"

Beam Angle

3 30°

6 65°

8 82°

LED Color

- Ⓐ Cool White
- Ⓑ Neutral White
- Ⓒ Warm White

Color Bin Code