

LED Escalator Demarcation  
+ Wet Location Option

# LED Demarcation

PATENTS  
PENDING

## LED Escalator Demarcation Light + Wet Location Option

### PRODUCT HIGHLIGHTS

- 9/12 Watts
- 24V DC Input
- 120/240V Power Option
- 65° Linear Beam
- Polycarbonate Optic
- Flexible Mounting Options

### TYPICAL APPLICATIONS

- Escalator Demarcation

## SPECIFICATIONS

### SUITABLE ENVIRONMENTS



Dry Damp Wet\*

### LED COLORS

- Green

### FINISH

- Black

### LENGTH

18"

### BEAM ANGLE



65°

### CERTIFICATIONS



S1203A-86D

VL3-865-3-HB

## Features

### ■ ADVANCED OPTICAL SYSTEM

Wide lateral distribution and advanced optical design provide uniform light distribution and a continuous light beam.

### ■ RUGGED DESIGN

Impact-resistant polycarbonate optic / housing, anodized aluminum construction, and electronic regulation to the LED source ensure product longevity.

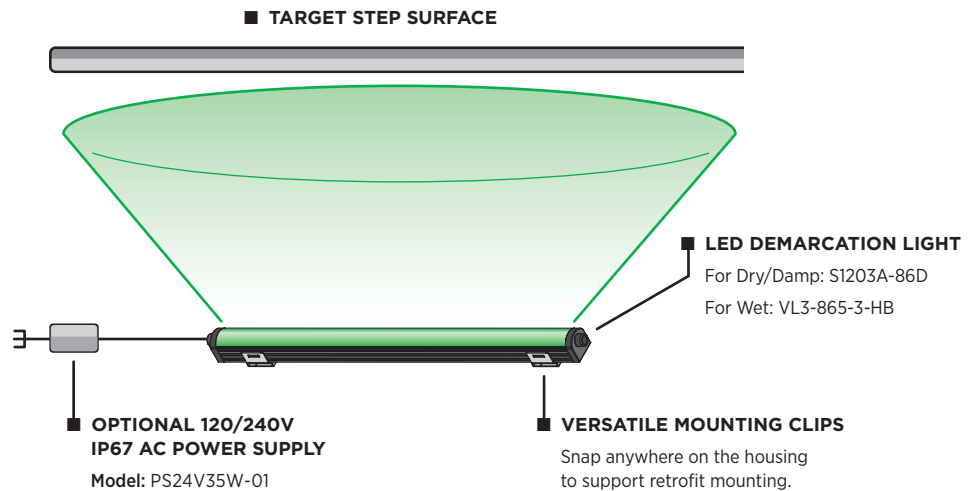
### ■ FLEXIBLE MOUNTING OPTIONS

Stainless Steel brackets are available in adjustable or fixed options. Snap-on and/or screw-in design allows installation to any position along the fixture.

### ■ 2 METER CABLE

Fixtures are configured with a 2 meter cable for simple installation.

## Example



\*Model VL3-865-HB Only.

# Dry/Damp Location

## SPECIFICATIONS

ITEM	PARAMETER	VALUE
Electrical	Input Power	9 Watts*
	Input Voltage Range	9-30V DC
	Integrated Driver	✓
	Protection Features	Active Thermal Management, Transient Protection, Reverse Polarity, Autoreset Fuse
Optical	Emitting Angle	65°
	LED Color	Green
	LED Colors per Fixture	1
	Class	Class 2 LED Product
Physical	Dimensions	Refer to drawings on right
	Housing Construction	Aluminum
	Lens Material	Polycarbonate
	Length	18"
	Finish	Black
	Mounting Method	Snap, End or Dovetail
	Operating Temp. Range	-20°C to 40°C, Max. Case Temp (Tc): 50°C
	Humidity	0 to 95%, non-condensing
	Environment	Dry, Damp
	Certification	FCC Part 15, cULus (US & Canada), RoHS Compliant

\*Due to constant power design, input current (Iin) will vary depending on input voltage. Be sure to size wire awg accordingly for worst case input voltage.

### ORDERING NUMBER

Demarcation Light: S1203A-86D

Optional 120/240V IP67 AC Power Supply: PS24V35W-01

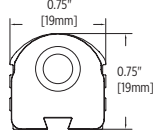
### DIMENSIONS

#### Length

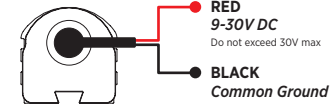
18.44" [469mm]



#### End



### WIRE FUNCTION



### MOUNTING

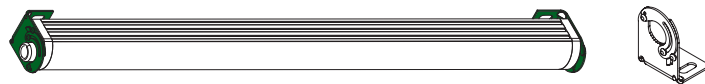
#### SLA-1: Adjustable Mounting Bracket



#### SLA-2: Fixed Mounting Bracket



#### SLA-3: Pivot Mounting Bracket



# Wet Location

## SPECIFICATIONS

ITEM	PARAMETER	VALUE
Electrical	Input Power	12 Watts*
	Input Voltage Range	18-30V DC
	Integrated Driver	✓
	Protection Features	Transient Protection, Reverse Polarity, Autoreset Fuse
Optical	Emitting Angle	65°
	LED Color	Green
	LED Colors per Fixture	1
	Class	Class 2 LED Product
Physical	Dimensions	Refer to drawings on right
	Housing Construction	Aluminum
	Lens Material	Acrylic
	Length	18"
	Finish	Black
	Mounting Method	Adjustable, Fixed, or Fixed End Dovetail
	Operating Temp. Range	-20°C to 40°C, Max. Case Temp (Tc): 50°C
	Humidity	0 to 95%, non-condensing
	Environment	Dry, Damp, Wet**
	Certification	FCC Part 15, ETL (US & Canada), RoHS Compliant

\*Due to constant power design, input current (Iin) will vary depending on input voltage. Be sure to size wire awg accordingly for worst case input voltage.

\*\*Product is rated for exterior applications, however it is not rated for submersible applications and should not be mounted in conditions where there is, or is a possibility of, standing water. When installing in wet or damp locations, it is good practice to seal all fixtures and junction boxes with electronics grade RTV silicone sealant to ensure that moisture cannot enter or accumulate in wiring compartments, cables, or other electrical parts. Product should not be installed in extreme locations, including but not limited to those outside of its temperature/humidity ratings and/or applications where product is subject to water runoff or downspouts.

### ORDERING NUMBER

Demarcation Light: VL3-865-3-HB

Optional 120/240V IP67 AC Power Supply: PS24V35W-01

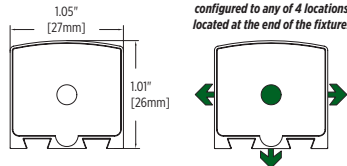
### DIMENSIONS

#### Length

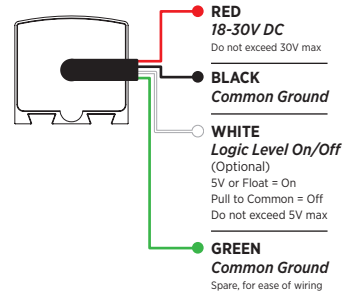
18.42" [468mm]



#### End



### WIRE FUNCTION



### MOUNTING

#### VLA-5: Adjustable Mounting Bracket



#### VLA-3: Fixed Mounting Bracket



#### VLA-6: End Mount Fixed Bracket

